

CERTIFICATE OF LOCATION OF GOVERNMENT CORNER

WEST 1/4 Corner of Section 18, Township 106N, Range 42W, 5TH P.M.

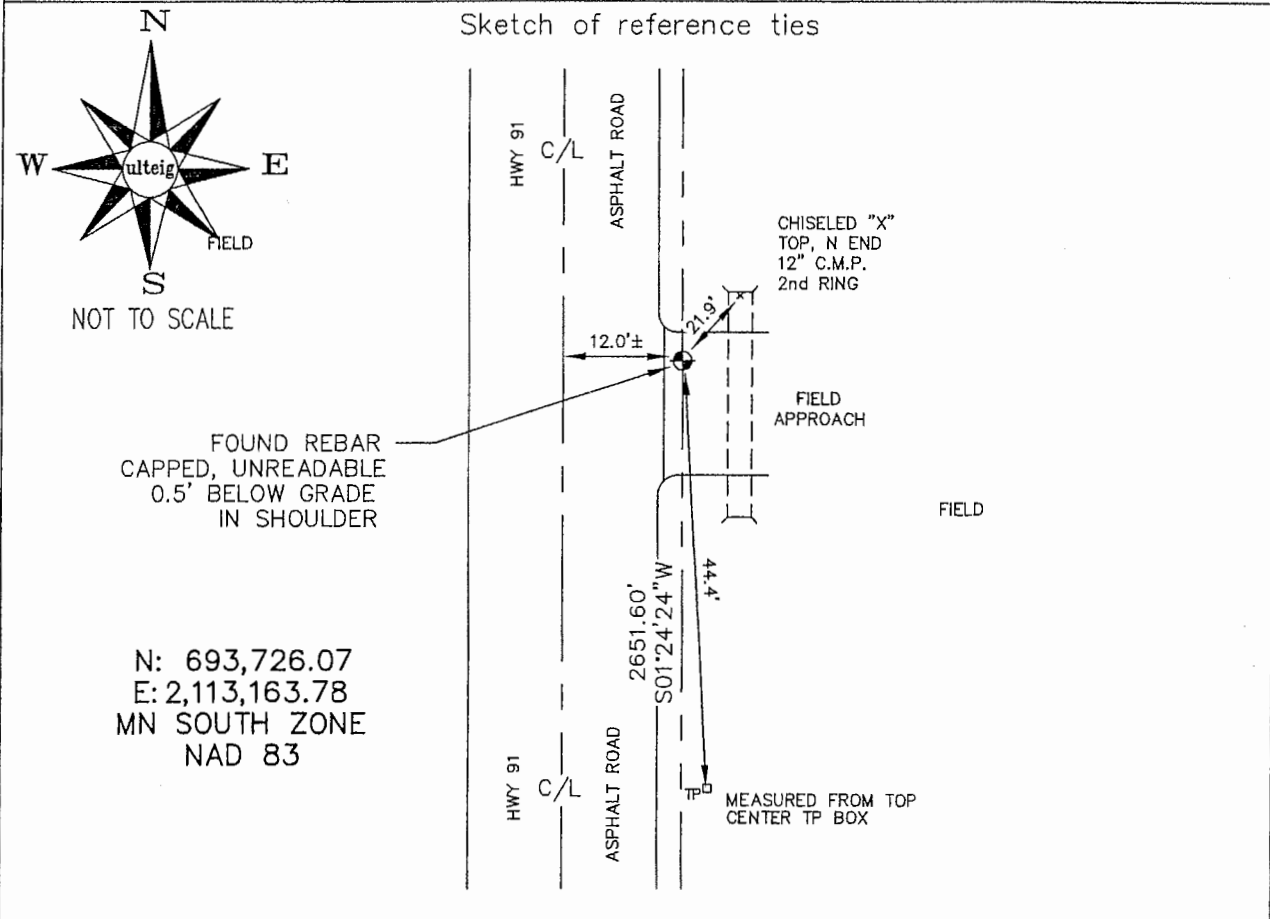
STATE OF MINNESOTA, County of MURRAY

At the corner location shown on the sketch :

On 4/11/2006 found FOUND REBAR WITH UNREADABLE CAP IN
ASPHALT PAVEMENT.

left monument as found, lowered monument, removed monument (explain)

On _____ set _____



Statement of evidence relative to this corner location is on back page

I hereby certify that this document and the data contained herein was prepared by me or under my direct supervision.

Thomas J. Zeff
Thomas J. Zeff
Date 6/29/06

Registration No. 44563
 Land Surveyor, Professional Engineer
 County Surveyor, County Engineer

OFFICE OF THE COUNTY RECORDER
County of _____

SEP 28 2006

I hereby certify that this document was filed in the Co. Recorders office at _____ .M. on the day of _____ A.D. , 20

County Recorder Jamie V. Johnson
By _____, Deputy

DOCUMENT NO. _____

STATEMENT OF EVIDENCE:

WEST 1/4 CORNER, SECTION 18, T. 106 N., R. 42 W.,
MURRAY COUNTY, MINNESOTA

- 1861 J.W. Myers, US. Deputy Surveyor, monumented west range line.
- ? Date MN DOT R/W Map for Trunk Highway 91, calls for "corner at intersection of fences running: north, south & west."
Referenced to C/L of Trunk Highway as: 11.9' right at POT 576+02.0.
- 4/11/2006 Ulteig Engineers, Inc., Survey Crew, Brian Payne Party Chief, found a rebar with an unreadable cap, in the shoulder, 12'± east from the C/L of pavement.
Ties: S-2651.60' to SW corner, Section 18.
NE-21.9' to chiseled "X", top, N end, 12" C.M.P.;
SE-44.4' to top, center, telephone pedestal.